

REGLAMENTO TÉCNICO BABY RoK

2016



RoK

by VORTEX

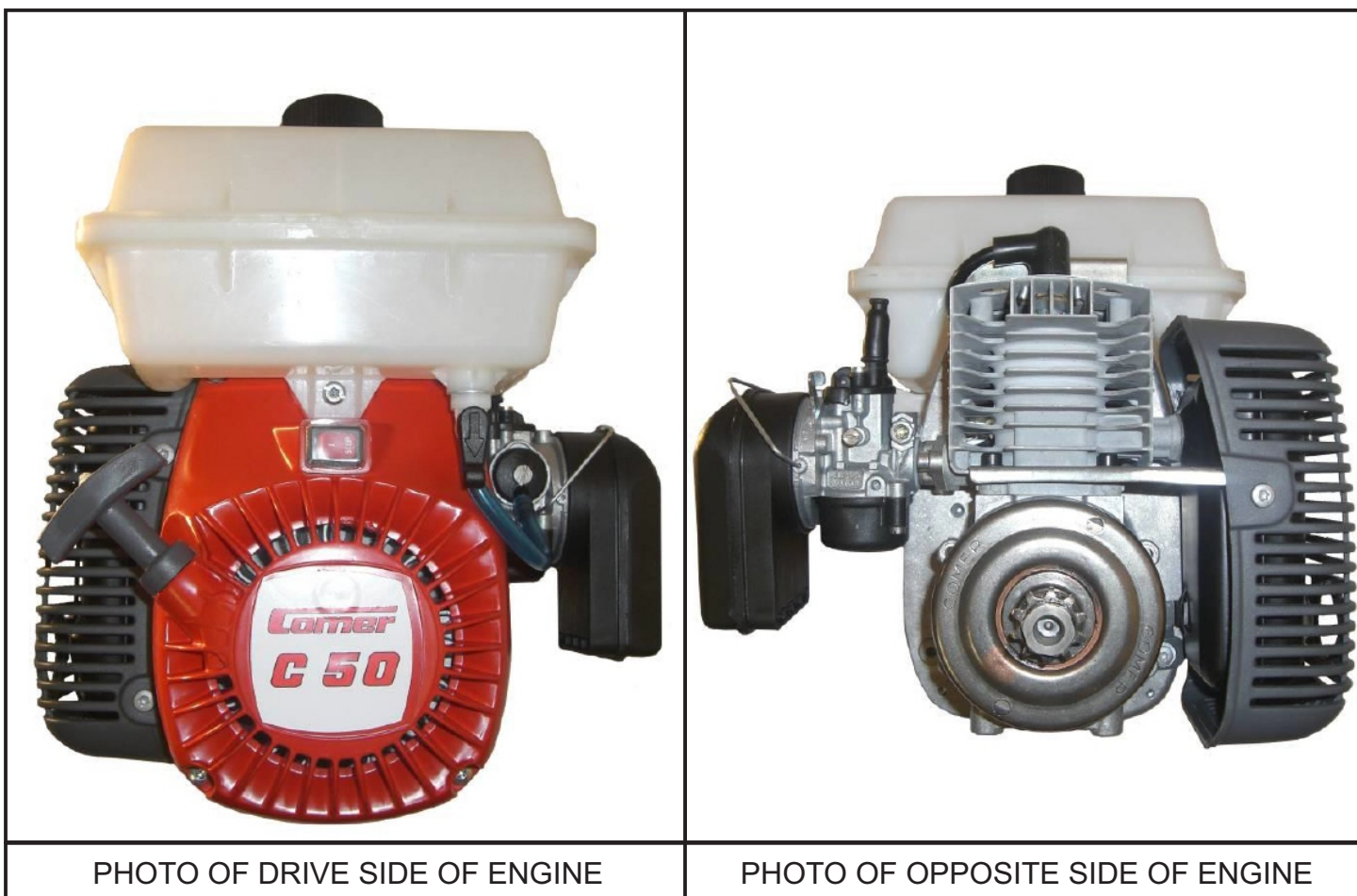
colt



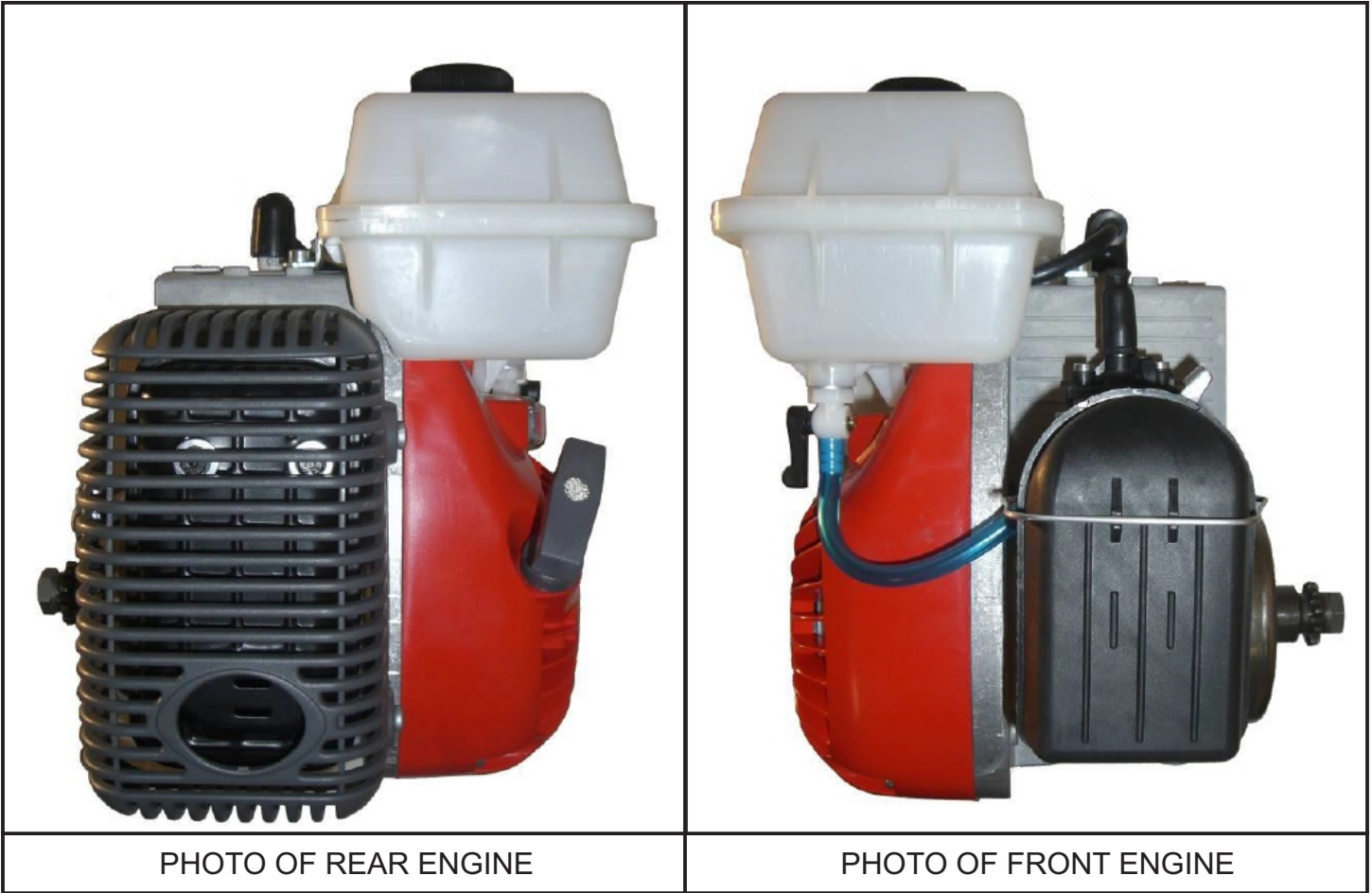
HOMOLOGATION OF KART ENGINE

CATEGORY	BABY ROK
MANUFACTURER	COMER SPA
MODEL	C50
NUMBER OF PAGES	8

This homologation form reproduces descriptions, illustrations and dimension of the engine at the moment of the Rok cup Colombia Homologation. This document may be supplemented by official amendment. This document must be read in conjunction with the appropriate class regulations.



SIGNATURE AND APPROVAL	
	DATE : 01 NOVEMBER 2015

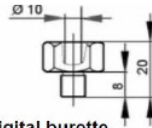


TECHNICAL FICHE**TRADEMARK:** **Comer****TYPE:** c 50**MANUFACTURER:** COMER SpA**TECHNICAL INFORMATION****BORE:** 40mm**STROKE:** 38mm**DISPLACEMENT:** 48cc

Looking devices and fixtures
may be replaced with NON
original parts.

FUEL: MIX 4%**IGNITION:** Electronic**SPARK PLUG:** Short thread**CLUTCH:** Centrifugal 3 pieces**SPROCKET:** Z 10**CARBURETTOR:** DELL'ORTO SHA -14-12L**CYLINDER:** Alluminium/nicasil or chromed

CYLINDER

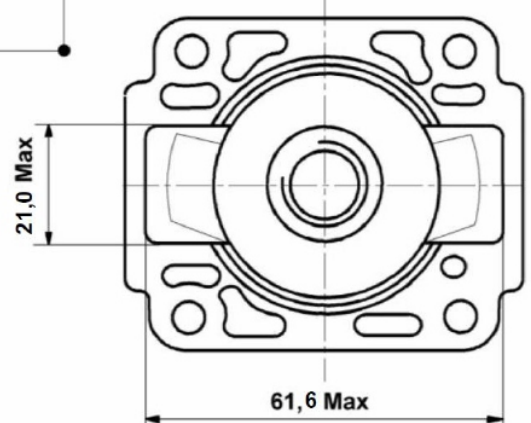
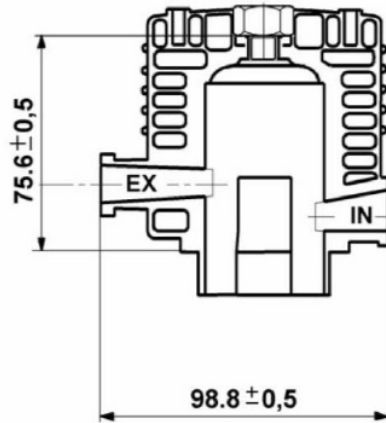
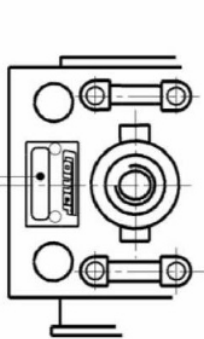


COMBUSTION CHAMBER: 7,1 cm³ minimum
Measured with W60 head volume adaptor measured with digital burette.

COMBUSTION CHAMBER: 7.4 cm³ minimum
Measured with glass burette and W60 volume adapter.

CYLINDER FLANGE

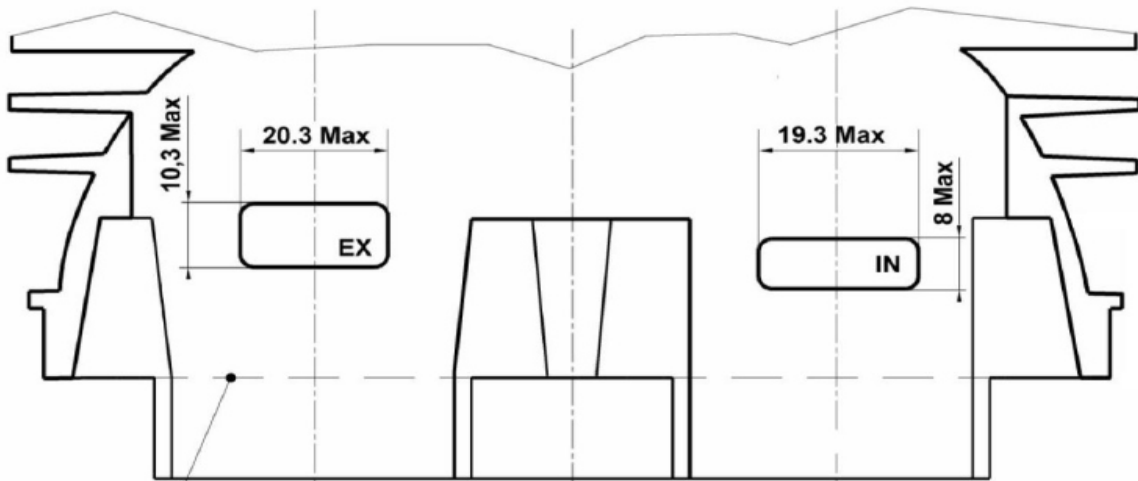
PROGRESSIVE NUMBER STAMP



CYLINDER DIAGRAM

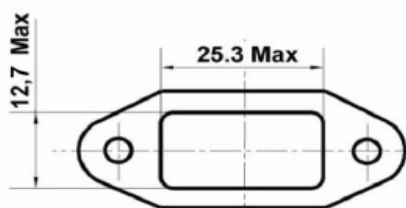
MEASURED WITH FEELER GAUGE WIDTH
8 mm THICKNESS 0.2 mm

INTAKE : 128° Max
EXHAUST : 140° Max

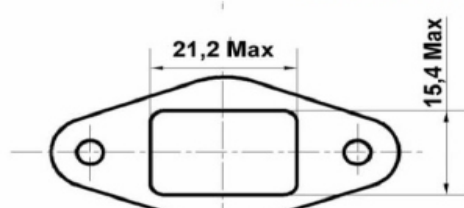


CYLINDER SUPPORTING SURFACE

BASE GASKET
THICKNESS - FREE



EXHAUST CYLINDER FLANGE

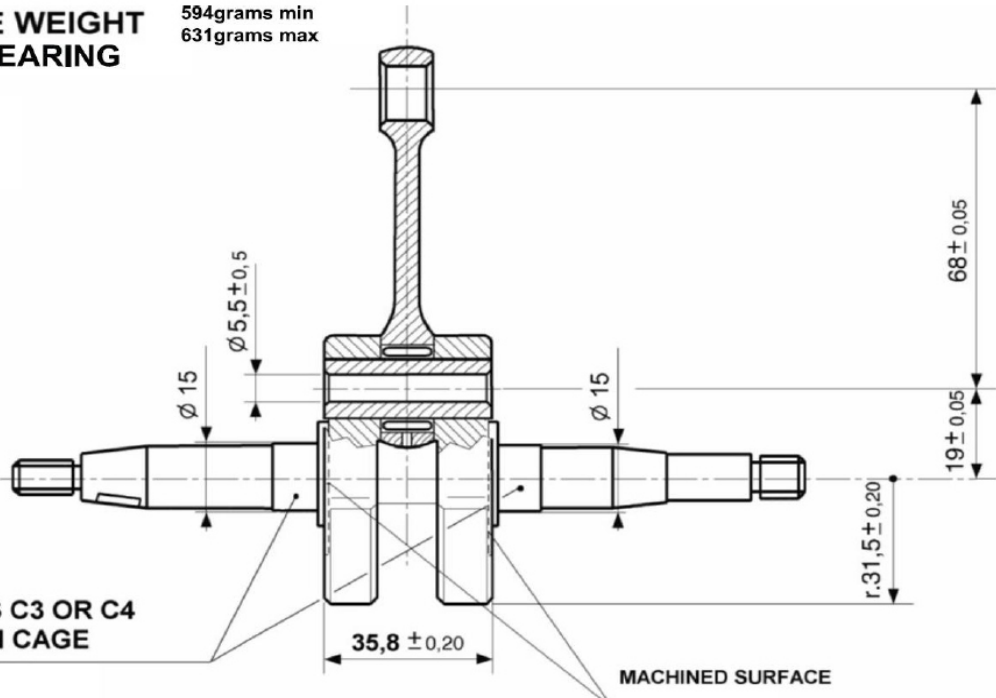


INTAKE CYLINDER FLANGE

COMPLETE CRANKSHAFT

CRANKSHAFT BARE WEIGHT WITH SMALL END BEARING

594grams min
631grams max

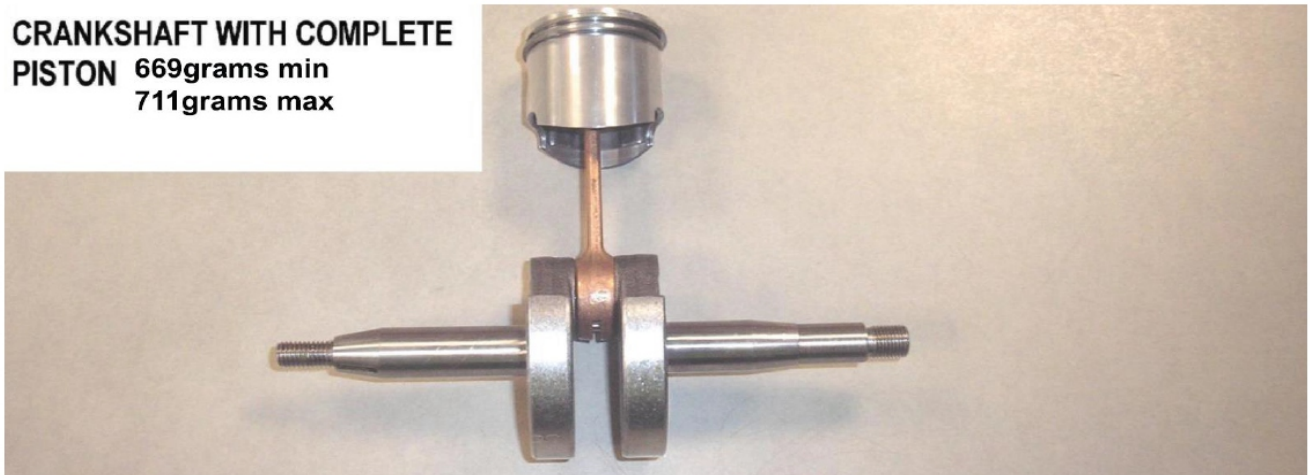


ORIGINAL OIL SEALS MARKED "COMER"

BEARINGS C3 OR C4 WITH IRON CAGE

MACHINED SURFACE

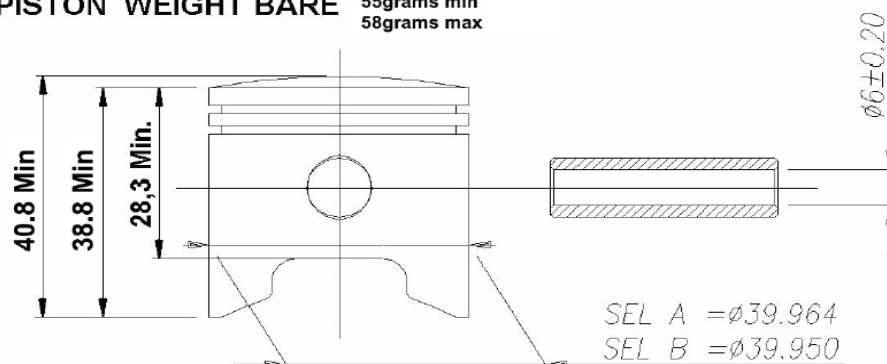
CRANKSHAFT WITH COMPLETE PISTON
669grams min
711grams max



PISTON

PISTON WEIGHT BARE

55grams min
58grams max



N° 2 Piston rings 1,48 ± 0,02

IGNITION

FLYWHEEL
FJ MODEL

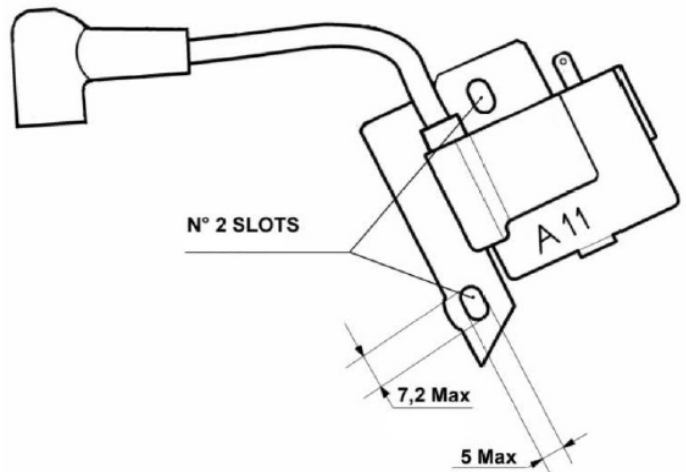
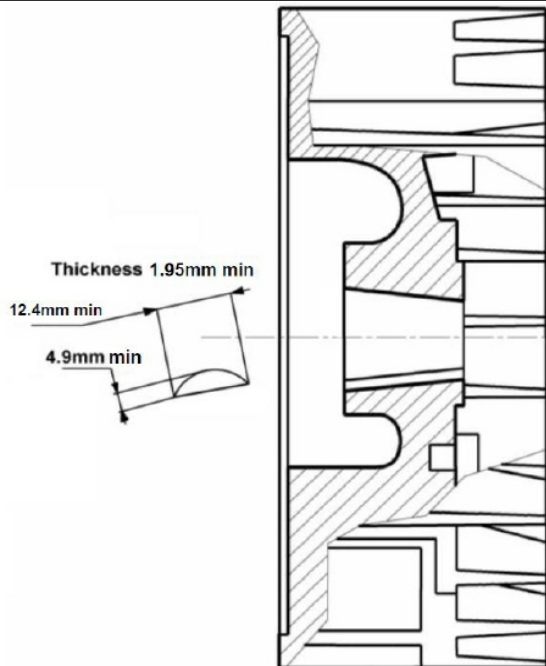
COIL

FJ MODEL A11



CODE FJ 20-07

CODE FJ A11 20-07



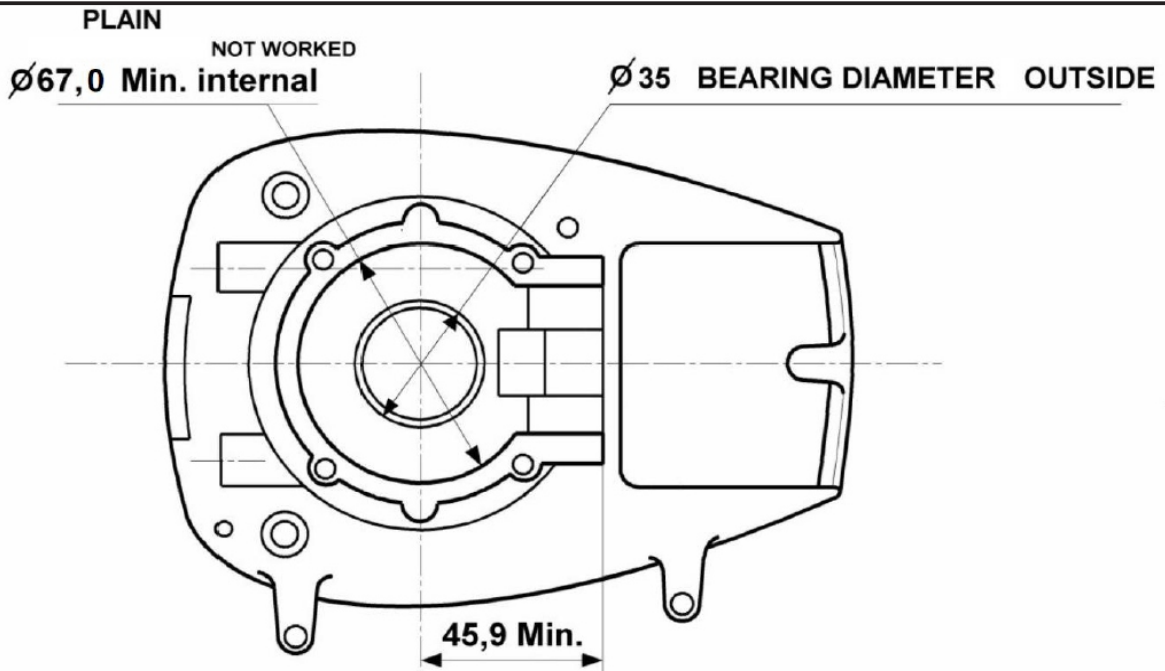
Weight= 378 min
without key 402 max

SPARE PART CODE: C050-453-02

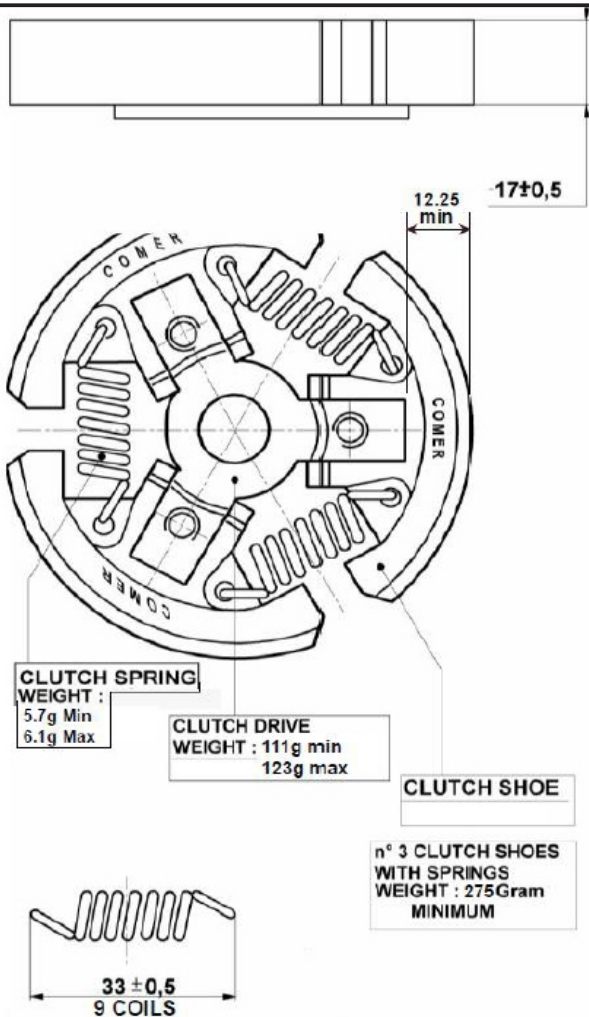
SPARE PART CODE: C050-425-02

SPARK PLUGS CHAMPION RCJ7Y - BOSCH WS5F OR WSR7F

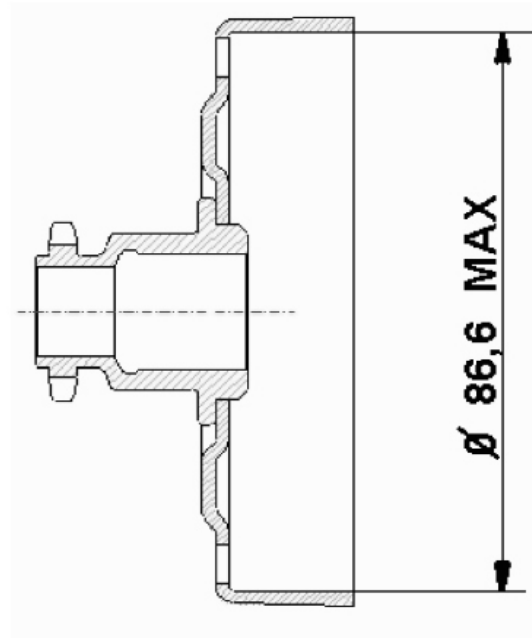
CRANKCASE



CLUTCH



SPROKET



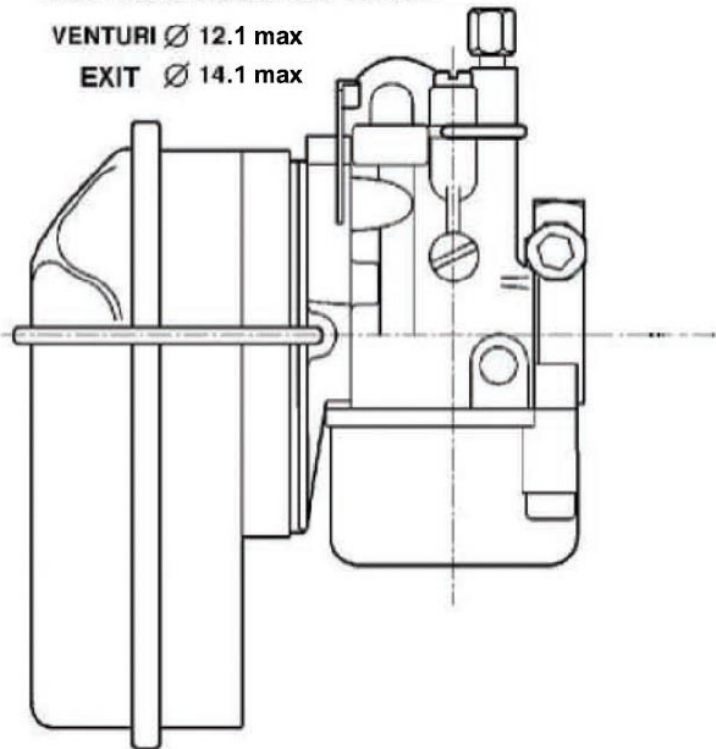
SPROCKET "COMER" 10 TEETH PITCH 219

CARBURETTOR

DELL' ORTO SHA 14-12L ORIGINAL

VENTURI \varnothing 12.1 max

EXIT \varnothing 14.1 max



Emulsion Tube ID 1.75 max

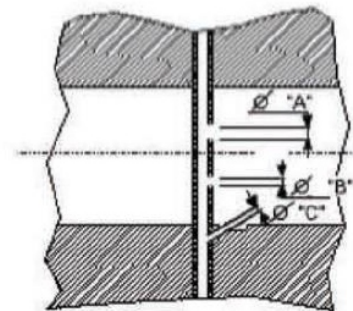
Slide No:7 (6108)

Float 3.5gr

Needle Seat ID 1.5max

Main Jet FREE

- \varnothing "A" = 1.25 mm
- \varnothing "B" = 0.80 mm
- \varnothing "C" = 0.80 mm



AIR BOX WITH 1 FILTER MIN

VERIFY CARBURETTOR NOZZLE WITH NO GO GAUGE

MUFFLER

MEASUREMENTS RELATE TO INNER SECTION WHICH MUST BE PARALLEL.

